



CULTIPACKER

Designed for efficient bed preparation, the C&M Cultipacker is built to break down large clods and create smooth, consistent seed beds for row-cropping applications. With high-speed operation and a dual linkage system for adjustable soil finish, it delivers reliable performance across a range of soil conditions.

Built for durability and easy maintenance, the Cultipacker features cast rings, heavy-duty greaseable bearings and optional configurations to suit specific farming requirements.

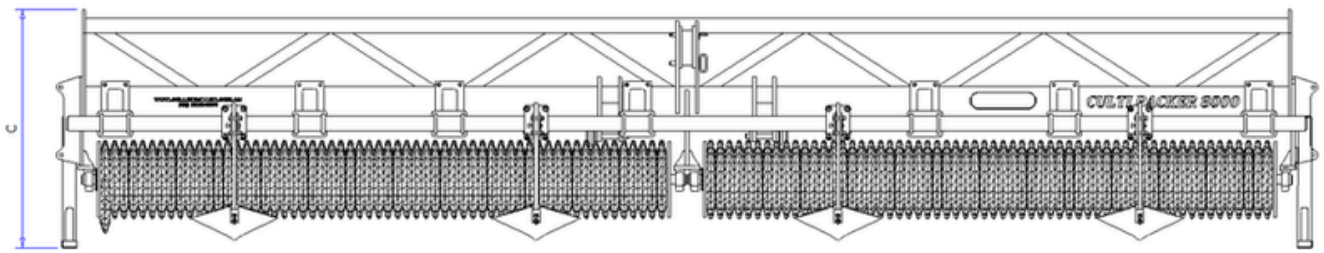
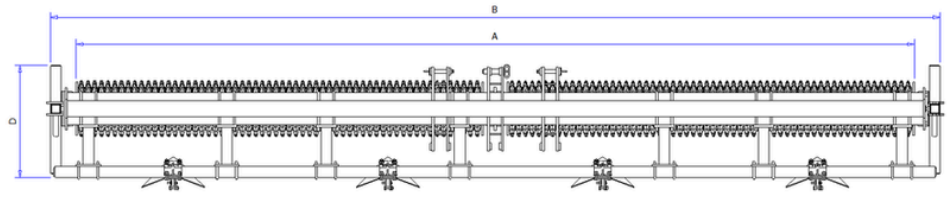
FEATURES & BENEFITS

- High speed operation capacity to ensure high productivity
- Dual linkage system to accommodate different soil finish
- Cast cultipacker rings
- High tensile linkage pins
- Heavy-duty greaseable bearings
- Powder coated finish
- Simple disassembly for easy maintenance
- Category 3 and 4 linkage





**SCAN FOR
MORE INFO**



MODEL	CMCP6000	CMCP8000	CMCP9000	CMCP12000
CULTIPACKER RING SIZE	14" x 20"	14" x 20"	14" x 20"	14" x 20"
ROLLING LENGTH (A)	6000 mm	8000 mm	9000 mm	12000 mm
OVERALL LENGTH (B)	6500 mm	8500 mm	9500 mm	12500 mm
OVERALL HEIGHT (C)	1585 mm	1585 mm	1585 mm	1585 mm
OVERALL WIDTH (D)	1045 mm	1045 mm	1045 mm	1045 mm
WEIGHT	3400 kg	3600 kg	4600 kg	5200 kg
LINKAGE	Dual CAT3/4	Dual CAT3/4	Dual CAT3/4	Dual CAT3/4
DOUBLE SIDED LINKAGE	Yes	Yes	Yes	Yes
OPTIONAL TOOLBAR ATTACHMENT	Yes	Yes	Yes	Yes